

Programme

Conference on Immigrant Deaf and Hard-of-Hearing Additional Language Learners

August 28 – 29, 2024, University of Cologne

Guest

The logo for the conference, featuring the text "IDEALL" in a bold, sans-serif font. The letters "ALL" are white and set against a circular background that resembles a globe with a blue and green color scheme. The letters "IDE" are in a dark teal color.

Federal Ministry
of Education
and Research

The logo of the University of Cologne, consisting of a dark teal square with the text "Universität zu Köln" in white, sans-serif font.

Table of Contents

Welcome	3
Conference Programme	5
Teacher Workshops (Wednesday, August 28)	5
Main Conference (Wednesday, August 28 – Thursday, August 29)	5
Poster Session	7
Venue	8
Hotel	10
Getting Around.....	11
Internet Access.....	13
Further Information	13

Conference on Immigrant Deaf and Hard-of-Hearing Additional Language Learners

August 28 – 29, 2024, University of Cologne

Neuer Senatssaal, Main Building, University of Cologne
Albertus-Magnus-Platz, 50923 Cologne

Welcome

We are delighted to welcome you to the Conference on Immigrant Deaf and Hard-of-Hearing Additional Language Learners at the University of Cologne in Cologne, Germany!

Our project team is supported by three student assistants and one administrative assistant, all of whom are actively engaged during the Conference. Please feel free to contact us under IDeALL-info@uni-koeln.de and +49 (0) 221 470-8326.

Maike Beyer, Nicole Marx, Franziska Schulte and Jürgen Wessel with the project support team

Support



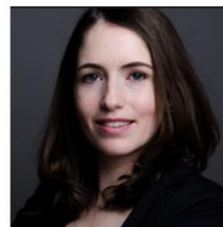
Alexa Zsigmond
Student assistant



Anna Gorsch
Student assistant



Nele Köslér
student assistant



Anna Schweizer
Administrative assistant

Feel free to reach out to us anytime during the conference!

IDeALL

Immigrant Deaf and Hard-of-Hearing Students as Additional Language Learners

<https://ideall.uni-koeln.de/en/>

The IDeALL Project is being funded from October 1, 2021 - September 30, 2024 by the German Federal Ministry of Education and Research as part of the National Programme “Empirical Educational Research”. The IDeALL collaborative research group, with members from ten countries in Europe and beyond, focusses on language learning and teaching with d/Deaf and hard-of-hearing immigrant learners. Its main aim is to assist in developing an interdisciplinary and international research network to provide a basis for (1) research on (language) learning and teaching, (2) recommendations for pre-service teacher training, and (3) the formulation of recommendations for teachers, parents, pedagogical specialists, and learners.

Project members:

Claudia Becker
Humboldt University Berlin, DE

Maike Beyer
University of Cologne, DE

Elettra Casellato
University of Leeds, GB

Natalie Czeke
University of Leeds, GB

Caroline Guardino
University of North Florida, USA

Julia Hofweber
Northeastern University London, GB

Eun Young Kwon
University of British Columbia, CA

Liz Adams Lyngbäck
University of Stockholm, SE

Nicole Marx
University of Cologne, DE

Franziska Schulte
University of Cologne, DE

Jürgen Wessel
University of Cologne, DE

Institution: Equalizent
Vienna, AU

Diane Bedoin
Normandy University Rouen, FR

Joanna Cannon
University of British Columbia, CA

Kate Crowe
University of Iceland, IS

Nora Kate Duggan
University of Stockholm, SE

Daan Hermans
Royal Kentalis International, NL

Ingela Holmström
University of Stockholm, SE

Camilla Lindahl
University of Stockholm, SE

Chloe Marshall
University College London, GB

Krister Schönström
University of Stockholm, SE

Ruth Swanwick
University of Leeds, GB

Katharina Urbann
Humboldt University Berlin, DE

Institution: Gronewald School
Cologne, DE

Conference Programme

Teacher Workshops (Wednesday, August 28)

Mittwoch, August 28, 2024 (Sprachen: DGS und Deutsch)	
9:30 – 9:45	Eröffnung des Lehrer:innentages (Sprachen: DGS, Deutsch) (Jürgen Wessel)
9:45 – 11:00	Workshop 1: Materialentwicklung für den Unterricht mit neu zugewanderten Schüler:innen mit einer Hörbehinderung Leitung: Maike Beyer (Köln), Franka Köhler (LWL-Münsterlandschule, Münster), Franziska Schulte (Köln)
11:15 – 12:30	Workshop 2: Sprachstandserhebungen: Der Einsatz des SRT-Kids mit bimodal-multilingualen Schüler:innen Leitung: Solveig Chilla (Flensburg), Barbara Hänel-Faulhaber (Hamburg), Anne Wienholz (Hamburg), Lina Abed Ibrahim (Flensburg)
12:30 – 13:45	Mittagessen für Beteiligte am Lehrer:innentag (optional) in der Mensa

Main Conference (Wednesday, August 28 – Thursday, August 29)

Wednesday, August 28, 2024 (Languages: DGS, English, STS)	
14:00 – 14:30	Conference Opening and Presentation of the IDeALL Project
14:30 – 15:15	Opening Talk: Ingela Holmström and Krister Schönström (Stockholm, Sweden): The Educational Challenges and Language Learning of Deaf Migrants
15:15 – 16:00	Coffee Break with Poster Session
16:00 – 16:45	Discussion Panel on Teaching IDeALL Discussants: Romel Belcher (Saved by the Sign, Stockholm, Sweden/Dublin, Ireland), Rainer Schygulla (Johann-Joseph-Gronewald School, Cologne, Germany) Moderation: Katharina Urbann (Berlin, Germany)
16:50 – 17:10	Outside of Academia: Ying Guo (Shahrzad e.V., Cologne, Germany): Volunteer Organisation for Immigrated DHH
17:15 – 17:30	Closing Session and Outlook to Day 2
19:30	Dinner (Restaurant Stadtgarten)

Thursday, August 29, 2024 (Languages: DGS, English, STS)	
9:00 – 9:15	Opening
9:15 – 9:45	Nathalie Czeke (Leeds, GB): Multimodal Methods to Examining and Supporting the Situated Communication Among Deaf Children and their Caregivers in Multilingual Households
9:45 – 10:15	Elettra Casellato (Leeds, GB): Multiple Language Acquisition in Deaf Children with Cochlear Implants from Multilingual and Multicultural Homes
10:15 – 11:00	Coffee Break and Change to Seminar Building
11:00 – 12:15	Round Table Discussions I (Seminar Building) <ul style="list-style-type: none"> 1. Global Connections in Research (Room S-24) Leads: Daniel Fobi (Wanneba, Ghana), Daan Hermans (Utrecht, Netherlands), Ruth Swanwick (Leeds, GB) 2. New Directions (and New Connections) in Research (Room S-25) Leads: Diane Bedoin (Rouen, France), Julia Hofweber (London, GB)
12:15 – 13:45	Lunch in the university cafeteria (Mensa)
13:45 – 15:00	Round Table Discussions II (Seminar Building) <ul style="list-style-type: none"> 3. Refugees and Trauma (Room S-24) Lead: Claudia Becker (Berlin, Germany) 4. Ethical Issues in Research with IDML (Room S-25) Leads: Liz Lyngbäck (Stockholm, Sweden), Elettra Casellato (Leeds, GB), Nora Duggan (Stockholm, Sweden), Katharina Urbann (Berlin, Germany)
15:15 – 15:45	Nora Duggan (Stockholm, Sweden): Lost in the System: Deaf Migrants' Experiences with Linguistic Integration in Sweden
15:45 – 16:15	Maike Beyer (Cologne, Germany): Teachers' Use of Semiotic Resources in the Bimodal-Multilingual Classroom with Immigrated Students
16:15 – 16:45	Closing Talk: Cultural Competence? Culturally Linguistically Responsive Teaching Strategies?: Learning from Teachers of Deaf Multilingual Learners in Europe and North America Presenters: Maike Beyer (Cologne, Germany), Joanna Cannon (Vancouver, Canada), Caroline Guardino (Florida, USA), Eun Young (Key) Kwon (Vancouver, Canada), Katharina Urbann (Berlin, Germany)
16:45 – 17:00	Coffee Break
17:00 – 17:30	Summary of the Round Table Discussions
17:30 – 17:45	Conference Closing

Poster Session

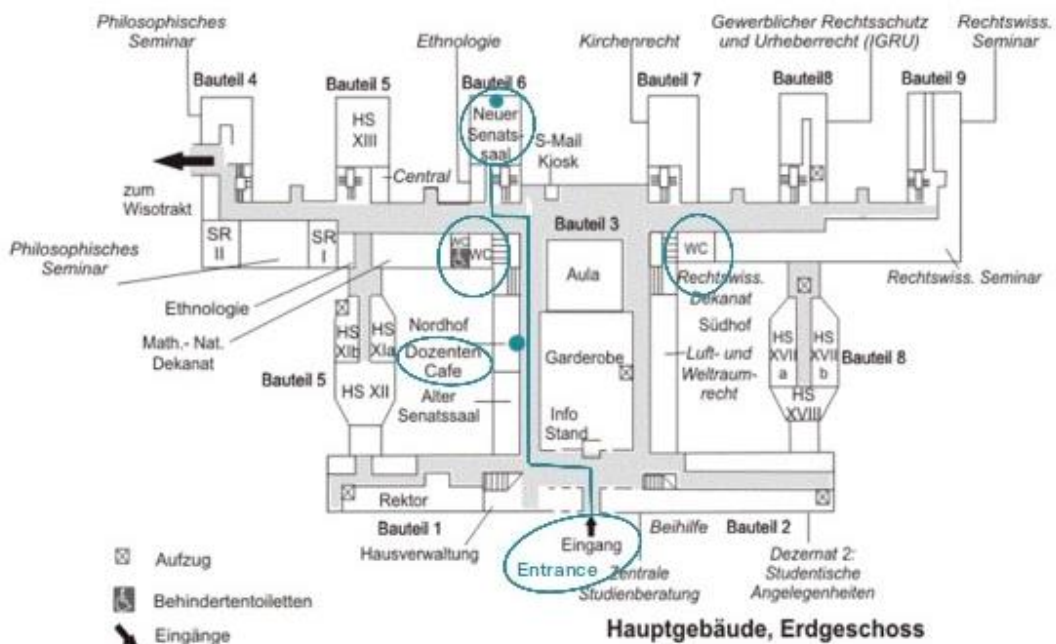
- A Case Study: Exploring Considerations in the Education of a Learner who is Deaf with Autism from an Immigrant Family (*Eun Young Kwon*)
- IDeALL - Immigrant Deaf and Hard-of-Hearing Additional Language Learners (*Project Poster*)
- Language Acquisition in Deaf Children with CI from Multilingual and Multicultural Families (*Elettra Casellato, Ruth Swanwick, Edward Killan*)
- Language attitudes of deaf Ukrainian Immigrants (*Anastasia Bauer, Roman Poryadin*)
- Literacy Skills of Deaf Children (*Lizzy Aumônier, Julia Hofweber, Vikki Janke, Zhenghan Qi*)
- Multimodal Communication in the Absence/Presence of Sensory and Communication Asymmetries (*Nathalie Czeke, Ruth Swanwick, & Edward Killan*)
- Teacher Competencies in Second Language Instruction of Newly Immigrated Deaf and Hard of Hearing Students (*Violeta Blahusch*)
- Teachers' Use of Semiotic Resources for Meaning-Making in the Bimodal-Multilingual Classroom (*Maike Beyer*)
- The Cognitive Effects of Sign Multilingualism: Sign Language Expertise Enhances Language- and Modality-Specific Statistical Learning Abilities (*Lizzy Aumônier, Katherine Trice, Tess Latham, Zhenghan Qi, Julia Hofweber*)
- What Factors Account for Differences in Deaf Migrants' Linguaging Practices? Evidence from Twelve Signers in Austria (*Julia Gspandl*)

Venue



The University's main building, Albertus-Magnus-Platz 1, 50931 Cologne

The venues of the conference are the University's main building ("Hauptgebäude") and its seminar building ("Seminaregebäude"). On both days, we will be meeting in the "Neuer Senatssaal" ("New Senate Chamber") in the University's main building. The workshops on Wednesday will take place in the "Dozentencafé" ("Lecturer's Room"), which is also located in the University's main building. In this room, you can also store your luggage, if you need. Both rooms are on the ground floor.

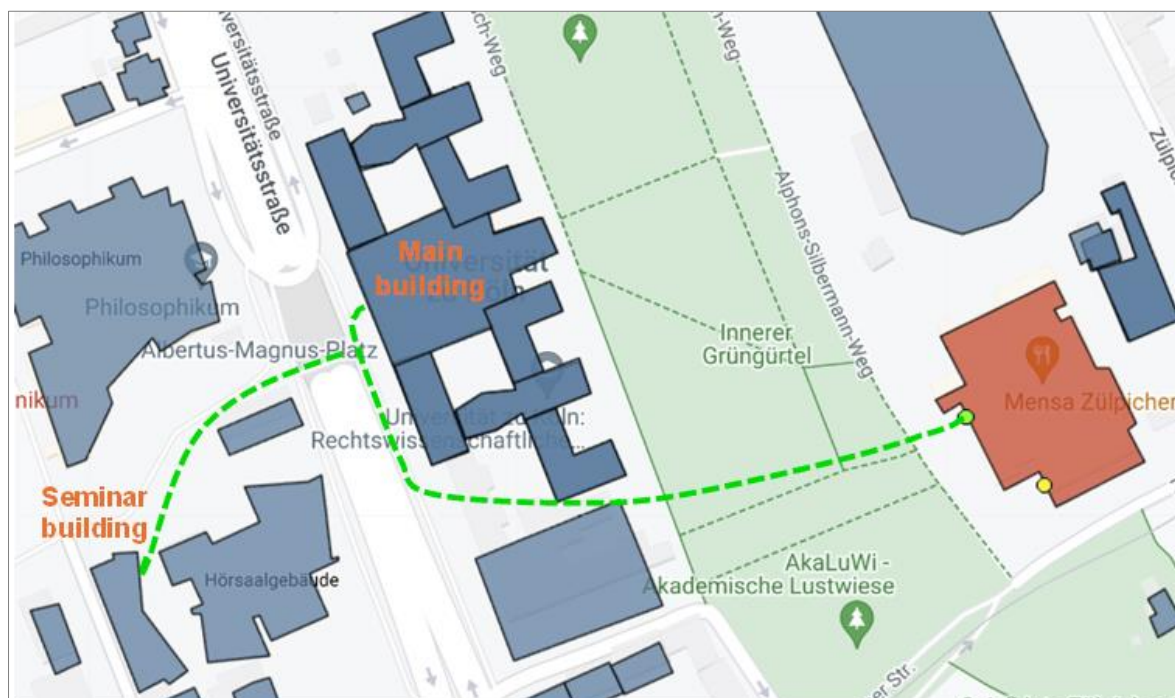


The Round Table Discussions on Thursday will be held in the seminar building (“Seminargebäude”, building 106), which is located near the University’s main building:



The names of the rooms in the seminar building start with the letter S. We will be using the rooms S-24 and S-25, which are all located on the second floor.

The Mensa, or University Canteen, where the lunches are planned, is a direct walk from the University’s main building over the Grüngürtel (literally: “Green Belt”, i.e., a sometimes-green lawn) (address is: Zülpicher Straße 70).



Hotel



The Hotel "Flandrischer Hof" is located near the university and the city centre, in a lively area called the "Belgian Quarter" ("Belgisches Viertel"). Breakfast at the hotel is included in your stay.

Address:

Hotel Flandrischer Hof

Flandrische Street 3-11
50674 Cologne

E-mail:

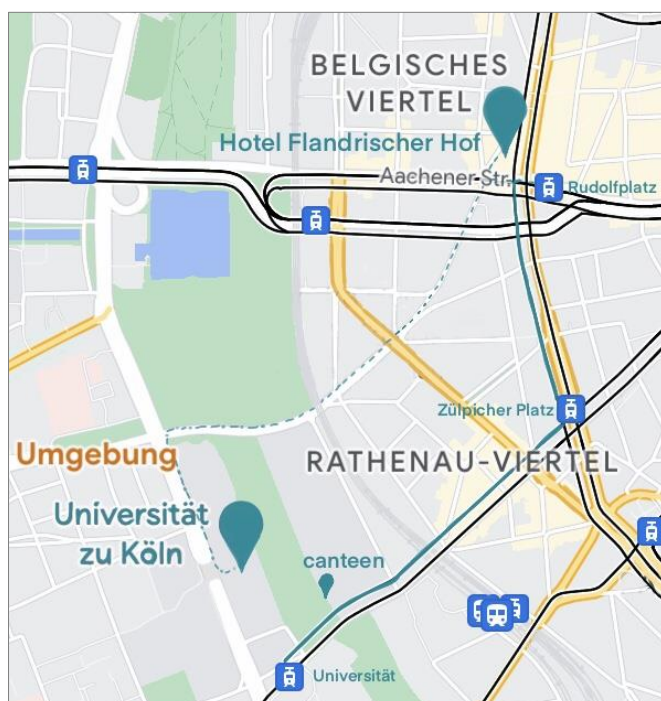
info@flandrischerhof.de

Telefon:

[+49 \(0\)221-20360](tel:+49(0)221-20360)

Getting Around

The hotel is 1.2 km from the University's main building, where we are meeting. **To walk from the hotel to the university**, begin on Flandrische Street, walk southwest in the direction of Brabanter Street. Turn left onto Brabanter Street, cross Richard-Wagner-Street, and continue on Händelstraße for 350 meters. Then turn right onto Lindenstraße and follow the street until Zülpicher Wall (on your left). Turn right to stay on Bachemer Street, follow the street for 350 meters and cross the green belt (Grüngürtel). Finally, turn left onto Universitätsstraße and go straight on until you reach the University's main building.



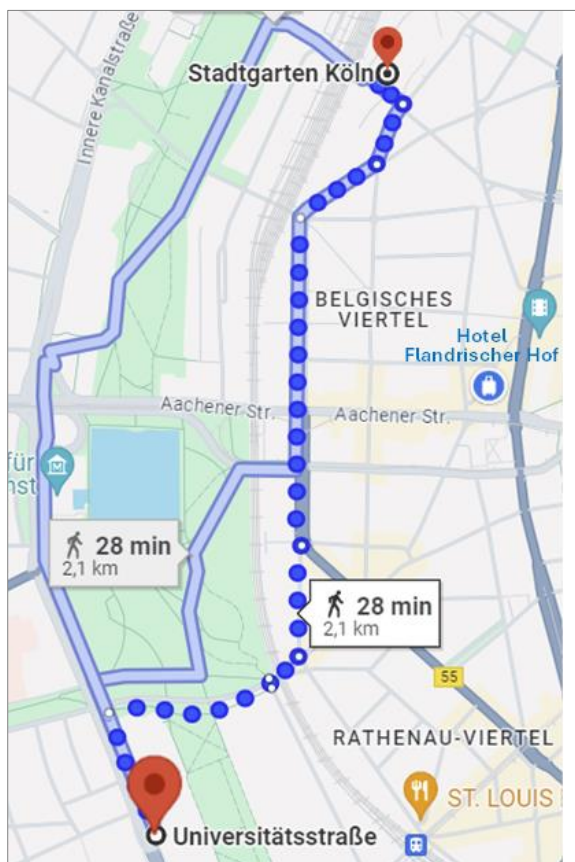
(Alternatively, just ask Googlemaps.)

Also, you can reach **the university from the hotel by public transportation**, run by the KVB. The underground station closest to the hotel is Rudolfplatz. Take Line 12 in the direction of Zollstock and get off at Zülpicher Platz (one stop). There, change to Line 9 in the direction of Sülz and get off at Universität (one stop). Turn right on the street Universitätsstraße and follow for about 200 m until you reach the University's main building (right side).

The ride with public transport takes about 10 minutes and costs 2 Euros within the price level 'Kurzstreckenticket Erwachsene'. We recommend the KVB-Homepage <https://www.kvb.koeln/en> and the App that you can download using this QR-Code:



Similarly, you can reach **the restaurant "Stadtgarten"**, in which the dinner on Wednesday is taking place, either on foot or by using public transportation.

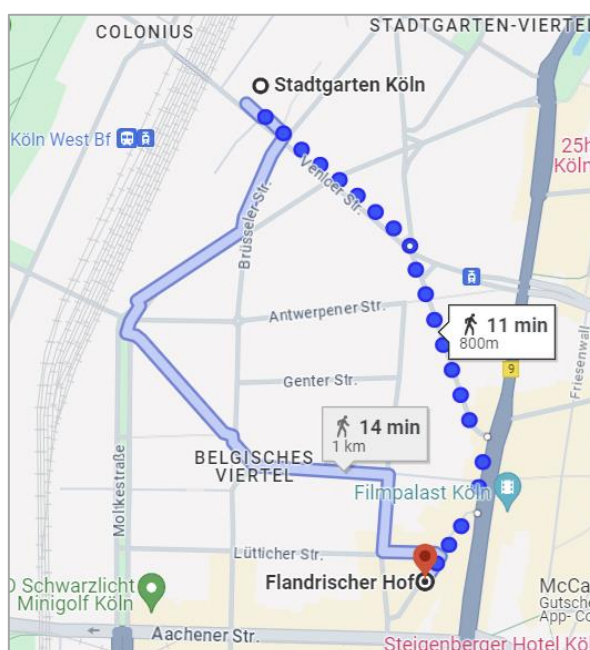


The walk from the university to the restaurant is approximately 2.1 km long and takes about 30 minutes. Starting from the University's main building, head north on Universitätsstraße for 300 meters, then turn right onto Bachemerstraße and walk approximately 450 meters. Turn left onto Lützwowstraße and follow it for 250 meters, then continue onto Moltkestraße for 700 meters. Turn slight right onto Bismarckstraße and after 200 meters turn left onto Brüsseler Str. After approximately 100 meters, turn left onto Venloer Str. You find the restaurant in approximately 70 meters on your right.

There are several options for **getting from the university to the restaurant using public transportation**. First, you can walk to the "Universität" tram stop on Universitätsstraße and take the tram line 9 heading towards "Königsforst". Ride for two stops and get off at "Zülpicher Platz". From there, transfer to the tram line 12 or 15 in the direction of "Merkenich" or "Chorweiler". Ride for two stops and get off at "Friesenplatz".

From "Friesenplatz", walk on Venloer Str. for about 500 meters until you reach the restaurant. Alternatively, you can take the bus line 142 from the stop "Universität" and, after six stops, transfer to the tram line 3 or 4. Ride for three stops and get off at "Hans-Böckler-Platz/Bahnhof West". Walk southeast on Venloer Str. for approximately 100 meters. The entire journey should take around 25-35 minutes, depending on the wait times for the trams or bus.

The hotel "Flandrischer Hof" is an 11-minute walk (app. 800 m) from the restaurant "Stadtgarten". **To walk from the restaurant to the hotel**, head southeast on Venloer Str. for about 300 meters. Continue slight right onto Limburger Str. and follow it for another 300 meters. Turn right onto Hohenzollernring and walk for about 100 meters, then turn right onto Flandrische Str. and continue for 120 meters. The hotel will be on your left.



Internet Access

If your university/organisation is part of the eduroam network, we recommend using it for Wi-Fi access during the meeting. More information at: <https://rrzk.uni-koeln.de/en/internet-access-web/network-access/wireless-lan/instruction-eduroam>.

If your university/organisation does not use eduroam, we will create a guest account for you – just let us know.

Further Information

In the interest of sustainability, we are not providing bottled water. The tap water in Germany is of high quality. We ask that you bring your own bottles for water.

Tea and coffee will be provided during the breaks.